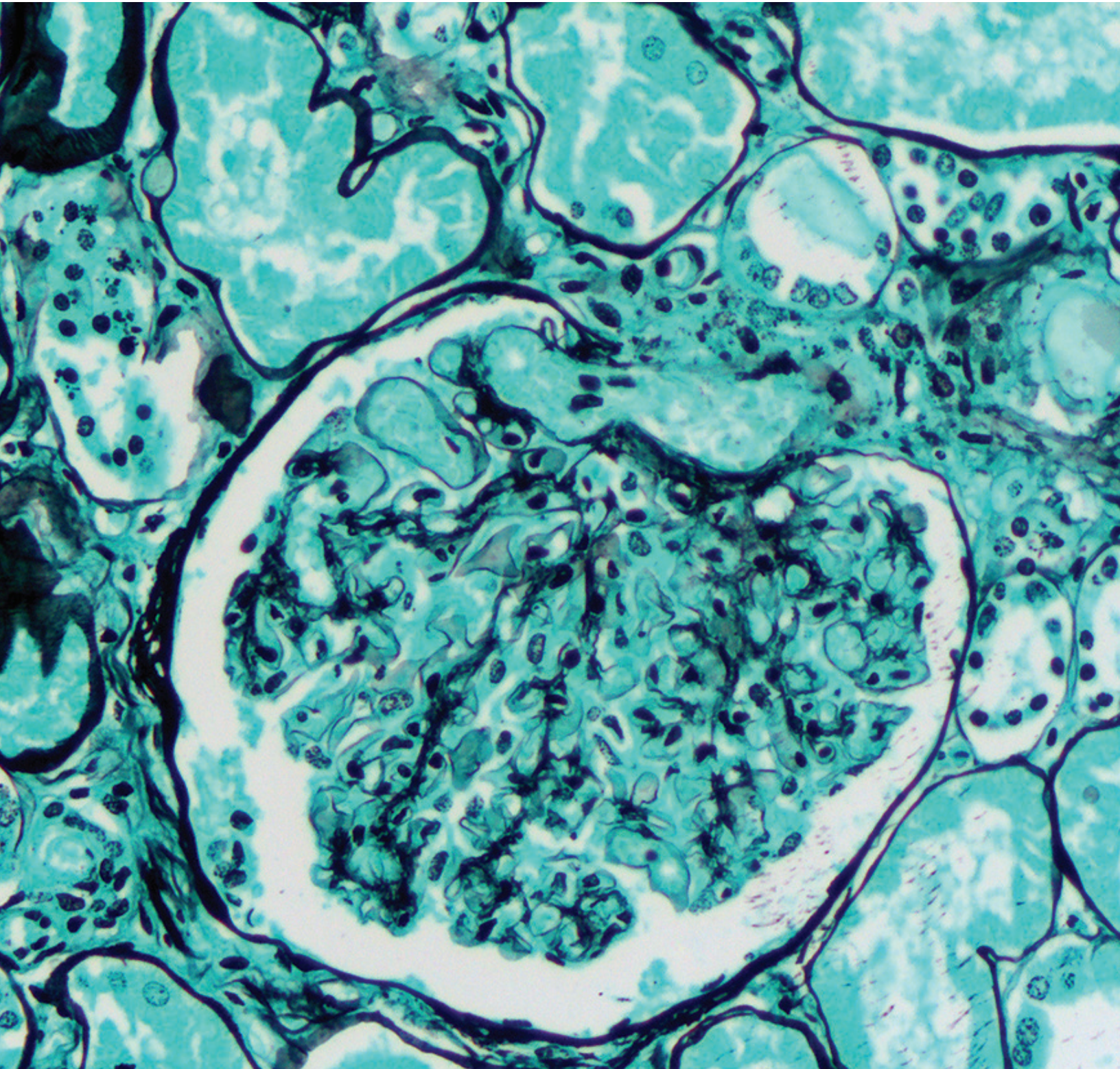


# CONTROL SLIDES



## Mission

**Keeping it real:** Our job is to help you get your job done! Everything we do is designed with your needs out front. Our goal is to make sure your goals are met.

**Keeping the lines of communication open:** Our technical support staff is ready to help you solve problems, resolve concerns, and make sure that your procedures run as smoothly as possible.

**Keeping prices competitive:** We take pride in making sure our products arrive at your lab with the fairest price possible.

**Keeping a sense of humor:** Life is Good! Don't forget that. We won't. If you're having a bad day, don't worry, it's our joy to make sure your day is full of HISTOCALIFRAGILISTICEXPIALIDOCIOUS!

"Most people are about as happy as they make up their minds to be." -Abraham Lincoln

We work hard to bring you the best histology supply services available. Please call 800-383-7799 or e-mail [info@newcomersupply.com](mailto:info@newcomersupply.com) anytime with any questions or comments.



## PLACING AN ORDER

To place an order, contact customer service by phone, fax, mail or email. Our experienced staff is available and ready to help you find the histology laboratory products you need. To see our current product listings, please visit our website. Our hours of operation are Monday through Friday 8 a.m. to 5 p.m. CST. Newcomer Supply reserves the right to refuse any order.

**Mail** Newcomer Supply Inc.  
Attn: Customer Service  
2505 Parview Road  
Middleton, WI 53562 USA

**Phone** 1-800-383-7799

**Fax** 1-608-831-0866

**Email** [orders@newcomersupply.com](mailto:orders@newcomersupply.com)

**Website** [www.newcomersupply.com](http://www.newcomersupply.com)

## PRICING

All prices are quoted in U.S. dollars. Newcomer Supply reserves the right to revise prices without notice. Orders will be invoiced at the price in effect on the day the order is processed. Quantity and standing order discounts are available upon request. Custom orders are subject to additional charges. Pricing does not include freight, handling charges, or taxes of any kind. Customers are responsible for paying any applicable taxes once invoiced by Newcomer Supply, or shall provide up to date and accurate tax exemption certificates.

## SHIPPING

In the UNITED STATES, orders are processed and shipped usually within 3 working days from receipt of the order for In Stock inventory. Made to Order items are processed and shipped within 1-2 weeks. Out of Stock and Custom orders ship within 2-3 weeks. If there is an unusual delay, we will notify you. Orders are shipped F.O.B. Middleton, WI, or other point of shipment pre-pay via common carrier. Third party freight accounts are accepted. If an "H" appears in the "Price" column in the website or catalog, a carrier mandated hazardous chemical charge may apply. Due to certain IATA restrictions, Newcomer Supply reserves the right to refuse to ship hazardous chemicals by air. Newcomer Supply does not accept hazardous chemical returns.

## TERMS

Payment terms are net 30 days. Overdue amounts are subject to carrying charges of 1.5% per month. We accept payment by check, wire transfer, EFT, Visa, and MasterCard. We reserve the right to require prepayment by those customers that cannot meet our terms. Shipments will not be made to customers with a "Past Due" invoice pending. A handling fee may be applied per order. Credit memos will be honored for 6 months. No cash refunds.

## RETURNS

Contact Newcomer Supply prior to returning any product. If you have a problem with a product or shipment, call us within five business days of the issue. Returns without a Return Authorization "RA" will not be accepted. Returns must be packaged as received and delivered undamaged within two weeks of RA date. If you ordered a product in error and request a return, a 25% restocking fee is applicable. Customers are responsible for return shipment costs. Original freight costs will not be credited. All custom orders are final, no returns. Newcomer Supply does not accept hazardous chemical returns.

## GENERAL INFORMATION

All products represented in the Newcomer Supply catalog are intended only for in vitro laboratory use by qualified professionals. They are not intended for drug, cosmetic, food, agricultural, pesticide, or household use. Any use other than that specifically authorized voids any and all warranties.

## SAFETY INFORMATION

For shelf life and storage temperature refer to individual product label. Chemicals should be handled only by qualified individuals trained in laboratory procedures and familiar with the potential hazards. Safety Data Sheets are available on our website, by email or mail. Technical Memos describing procedural methods are available for our customers via our website, mail or email.

## LIMITED WARRANTY

NEWCOMER SUPPLY, INC. ("NEWCOMER") warrants only that products manufactured by NEWCOMER are as represented in the catalog, and that products sold under the NEWCOMER label meet the minimum published specifications as to chemical and physical properties at the time of sale. NEWCOMER is not responsible if age or conditions of shipment or storage alter the physical and/or chemical properties of any products. If any product does not meet the standards of this warranty, NEWCOMER will, at its sole option, either (A) replace the product or products that do not meet this warranty; or (B) refund the purchase price for the product or products that do not meet this warranty; PROVIDED the product or products which do not meet this warranty are returned to NEWCOMER for inspection within thirty (30) days of the Date of Invoice, and such inspection reveals, to the sole satisfaction of NEWCOMER, that the warranty has been breached. This warranty is exclusive. NEWCOMER specifically disclaims any and all other warranties, express or implied, including the implied warranties of merchantability, fitness for a particular purpose, non-infringement and otherwise. In no event will NEWCOMER be liable for any lost revenue, lost profit, lost data, or attorney fees, or for any special, indirect, consequential, incidental, or punitive damages, however caused and regardless of the theory of liability. In no event shall NEWCOMER'S liability, if any, whether in contract, tort (including negligence), or otherwise, exceed the purchase price actually paid for the product or products that fail to meet this warranty.

# SPECIAL REQUESTS

We offer the ability for our customers to make special requests to our histopathology and immunopathology control slide products. The most commonly fulfilled special requests are changes to the tissue placement, drying method, section thickness, and/or slide glass. Special requests must be communicated each time an order is placed. For these orders an SR will be added to the end of the part number to signify the change. Because they are made after the order is placed, special request orders may take up to 2-3 weeks to manufacture. Many special request orders are fulfilled for no additional charge. However, when an additional charge is necessary it will be added as a separate line item fee on the sales order. This will be confirmed at the time of placing the order.

Below are some of the most common special requests. If you do not find the option you are interested in please inquire with Technical Support.

## TISSUE PLACEMENT

The standard tissue placement is mid-high on the slide. Options for tissue placement are MIDDLE OF SLIDE and LOW ON THE SLIDE.

## DRYING METHOD

The standard drying method is air dried with the slide oriented horizontally. Options for special request drying are OVEN DRIED AT 60°C FOR 60 MINUTES and/or VERTICALLY DRIED.

## SECTION THICKNESS *(Additional charge will apply)*

The standard section thickness for most of the histopathology control slides is 4 microns. The standard thickness for most of the immunopathology control slides is 4 microns. Some products by design vary from this standard so please contact Technical Support for part specific details. Possible request... NEW SECTION THICKNESS IN MICRONS.

## SLIDE GLASS *(Additional charge will apply)*

The standard slide glass used is Superfrost® Plus. Options for special request slide glass are Red Control Box slides, other slides available from the Newcomer Supply catalog, or customer supplied slides.

Newcomer Supply Custom Tissue Slides feature an inventory of human and animal tissue slides for your custom histochemical and immunohistochemical (IHC) staining needs. Custom Tissue Slides are Formalin Fixed Paraffin Embedded (FFPE) sections with availability from a wide range of organs and a variety of disease states. Custom Tissue Slides are sold in sets of 10 unstained slides with one complimentary hematoxylin and eosin (H&E) stained slide included, all mounted on Superfrost® Plus slides. (Custom Tissue Slides that are designated as “Limited Availability” are sold in sets of 5 unstained slides and do not include a stained H&E slide.)

**Your Custom Control Slide order can be further customized with choice of:**

- Microscope slide, glass type
- Tissue placement
- Section thickness
- Drying options

**INTENDED USES:**

- IHC validation
- Antibody development
- Student and teaching purposes
- Research
- Tissue type comparisons

**AVAILABLE TISSUES:**

- Human
- Human Abnormal
- Animal
- Animal Abnormal

Slides are cut per confirmed order, delivery time will be dependent on the custom options ordered.

We strive to assure the tissue meets the specifications we provide for pathological and histological characteristics. We cannot provide assurances that the tissue will be reactive in all applications.

For detailed information on the Custom Tissue Slide products we have available, please visit our website at:  
**[www.newcomersupply.com/products/custom-tissue-slides](http://www.newcomersupply.com/products/custom-tissue-slides)**

# TABLE OF CONTENTS

## HISTOPATHOLOGY . . . . .7

Acid Fast Bacteria (AFB), Animal . . . . .	7
Alcian Blue pH 2.5, Umbilical Cord . . . . .	7
Alcian Blue pH 2.5, Goblet Cell . . . . .	7
Alcian Blue pH 2.5, Barrett's Esophagus . . . . .	8
Alcian Blue pH 2.5, Multi-Tissue . . . . .	8
Alcian Blue/PAS . . . . .	8
Amyloid, Animal . . . . .	8
Argentaffin . . . . .	9
Basement Membrane . . . . .	9
Bielschowsky . . . . .	9
Bile . . . . .	9
Blastomyces sp. . . . .	10
Blastomyces sp., Animal . . . . .	10
Calcium . . . . .	10
Cat Scratch, Artificial . . . . .	10
Colloidal Iron . . . . .	11
Colloidal Iron, Multi-Tissue . . . . .	11
Copper, Animal . . . . .	11
Cryptococcus sp. . . . .	11
Elastic, Aorta . . . . .	12
Elastic, Skin . . . . .	12
Fite, Nocardia sp., Artificial . . . . .	12
Fungus, GMS . . . . .	12
Fungus, GMS, Aspergillus sp., Artificial . . . . .	13
Fungus, GMS, Aspergillus sp., Animal . . . . .	13
Fungus, GMS, Candida sp., Artificial . . . . .	13
Fungus, PAS, Aspergillus sp., Artificial . . . . .	13
Fungus, PAS, Candida sp., Artificial . . . . .	14
Fungus, GMS, Multi-Tissue, Artificial . . . . .	14
Giemsa . . . . .	14

Gram Positive & Gram Negative Bacteria, Artificial . . . . .	14
Gram, Multi-Tissue, Artificial . . . . .	15
Helicobacter sp., Animal . . . . .	15
Helicobacter sp., Artificial . . . . .	15
Helicobacter sp. . . . .	15
Hematoxylin and Eosin (H&E) . . . . .	16
Histoplasma sp., Animal . . . . .	16
Iron . . . . .	16
Iron, Animal . . . . .	16
Leptospira sp., Animal . . . . .	17
Luxol Fast Blue (LFB) . . . . .	17
Mast Cell . . . . .	17
Mast Cell, Animal . . . . .	17
Melanin . . . . .	18
Movat-Russell Pentachrome . . . . .	18
Mucin Mucicarmine . . . . .	18
Periodic Acid Schiff (PAS) Glycogen . . . . .	18
Phosphotungstic Acid Hematoxylin (PTAH) . . . . .	19
Pneumocystis sp., Animal . . . . .	19
Reticulum . . . . .	19
Spirochete, Artificial . . . . .	19
Spirochete, Animal . . . . .	20
Trichrome, Liver . . . . .	20
Trichrome, Kidney . . . . .	20
Trichrome, Uterus . . . . .	20
Trichrome, Multi-Tissue . . . . .	21
Urates . . . . .	21



<b>IMMUNOPATHOLOGY</b> .....	22	Desmin.....	29
Actin, Smooth Muscle.....	22	DOG1.....	30
Alpha-Fetoprotein (AFP).....	22	E-cadherin.....	30
BCL2.....	22	Epithelial Membrane Antigen (EMA).....	30
CA-125.....	23	Glial Fibrillary Acidic Protein (GFAP).....	30
Calponin.....	23	Helicobacter sp.....	31
Calretinin.....	23	Helicobacter sp., Animal.....	31
Carcinoembryonic Antigen (CEA).....	23	Helicobacter sp., Artificial.....	31
CD3, T-Cell.....	24	Hepatitis B Core Antigen (HBcAG).....	31
CD8.....	24	Hepatitis B Surface Antigen (HBsAG).....	32
CD10.....	24	HMB-45.....	32
CD15.....	24	Kappa.....	32
CD20, B-Cell.....	25	Ki-67.....	32
CD30.....	25	Lambda.....	33
CD31, PECAM-1.....	25	Melan-A (MART-1).....	33
CD34.....	25	Mismatch Repair (MMR) Positive.....	33
CD45, Leucocyte Common Antigen (LCA).....	26	Neuron-Specific Enolase (NSE).....	33
CD56.....	26	p16.....	34
CD68.....	26	p40.....	34
CD117, c-Kit.....	26	p53.....	34
CD138.....	27	p63.....	34
CDX2.....	27	Prostate Specific Antigen (PSA).....	35
Chromogranin A.....	27	S-100.....	35
CK5/14 + p63 + P504S, Multi-Tissue (PIN-4).....	27	SOX-10.....	35
CK5/14 + p63 + P504S.....	28	Spirochete, Animal.....	35
Cytokeratin AE1/AE3.....	28	Spirochete Treponema sp., Artificial.....	36
Cytokeratin 5/6 (CK5/6).....	28	Synaptophysin.....	36
Cytokeratin 7 (CK7).....	28	Thyroid Transcription Factor (TTF-1).....	36
Cytokeratin 20 (CK20).....	29	Toxoplasma sp., Animal.....	36
Cytokeratin, HMW.....	29	Vimentin.....	37
Cytomegalovirus (CMV).....	29	Wilms' Tumor (WT1).....	37

All control slides are on Superfrost® Plus

All controls are cut in serial sections.

10/set = 10 unstained slides and 1 stained slide.

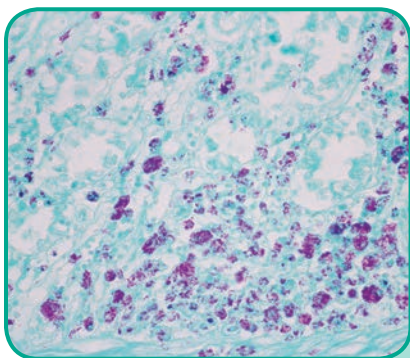
98/set = 98 unstained slides and 2 stained slides.

**Please note the following:** In human tissue unless otherwise indicated. All tissues are Formalin Fixed Paraffin Embedded (FFPE). All slides are air dried. Histopathology slides are cut at 4 microns, unless otherwise specified. Standard tissue placement is mid-high on slide. Histopathology control slides are not quality controlled for IHC methods, as such, we cannot guarantee antigenicity. The intended use of these control slides is to qualitatively assess the

performance of the special stain. These controls are not intended for quantitative purposes. Review the supplied stained slides with your pathologist prior to using the unstained slides to ensure that the intended analyte of interest is acceptable.

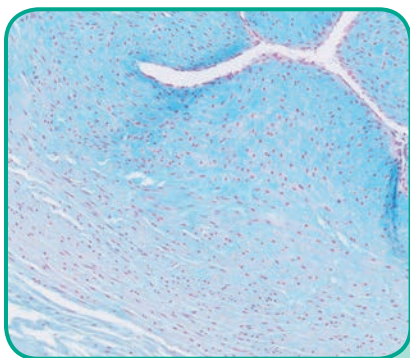
## Special Requests

We do offer the ability for our customers to make *special requests* on our histopathology control slide product line. The most commonly fulfilled *special requests* are changes to the tissue placement, drying method, section thickness and/or slide glass. When a *special request* has been applied to an order an **SR** is added to the end of the part number. Please see page 3 for more details.



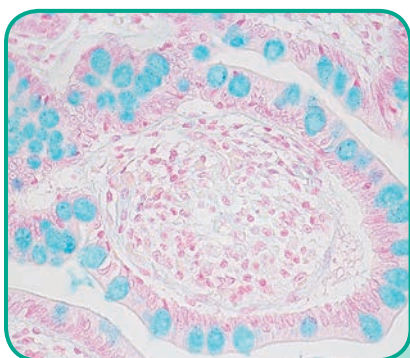
## Acid Fast Bacteria (AFB), Animal

TISSUE	PART	VOLUME
(+) Animal Organ	4011A	10/set
(-) Lung	4011B	98/set



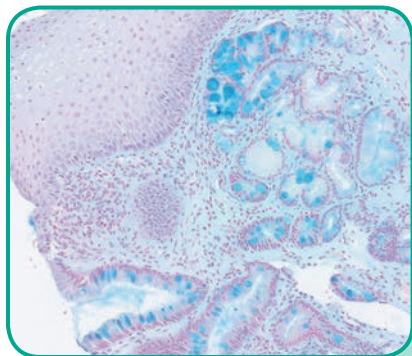
## Alcian Blue pH 2.5, Umbilical Cord

TISSUE	PART	VOLUME
(+) Umbilical Cord	4020A	10/set
	4020B	98/set



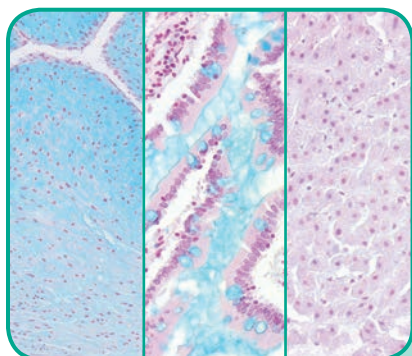
## Alcian Blue pH 2.5, Goblet Cell

TISSUE	PART	VOLUME
(+) Small Intestine	4051A	10/set
	4051B	98/set



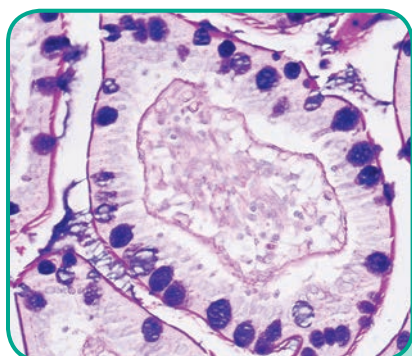
### Alcian Blue pH 2.5, Barrett's Esophagus

TISSUE	PART	VOLUME
(+) Barrett's Esophagus	4023A	10/set
(-) Liver		



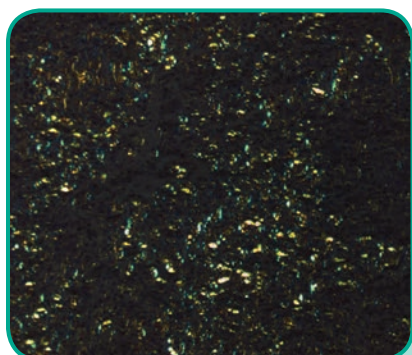
### Alcian Blue pH 2.5, Multi-Tissue

TISSUE	PART	VOLUME
(+) Umbilical Cord	4021A	10/set
(+) Small Intestine	4021B	98/set
(-) Liver		



### Alcian Blue/PAS

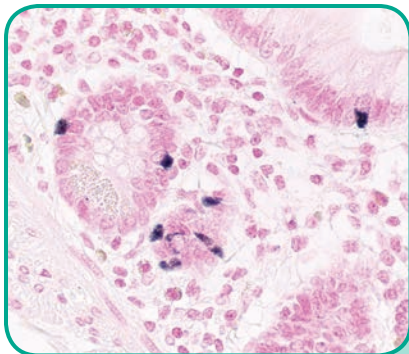
TISSUE	PART	VOLUME
(+) Small Intestine	4022A	10/set
	4022B	98/set



### Amyloid, Animal

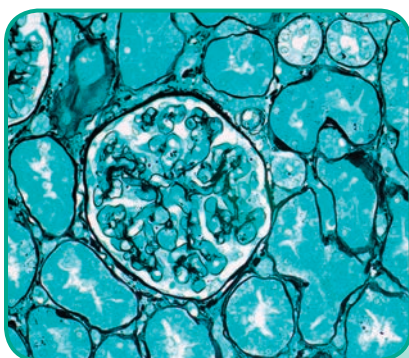
TISSUE	PART	VOLUME
(+) Animal Organ	4031A	10/set
	4031B	98/set

*In animal tissue with specific infection or disease. Tissue sections are cut at 8 microns.*



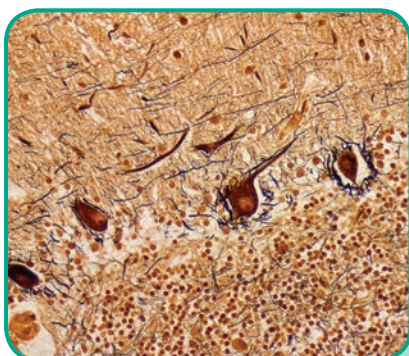
## Argentaffin

TISSUE	PART	VOLUME
(+ Small Intestine)	4035A	10/set
	4035B	98/set



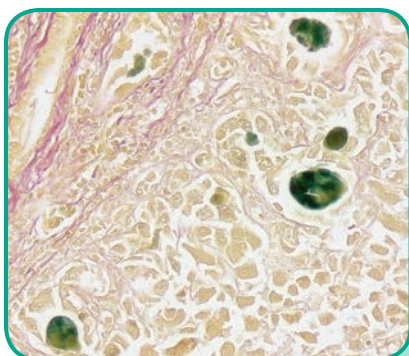
## Basement Membrane

TISSUE	PART	VOLUME
(+ Kidney)	4055A	10/set
	4055B	98/set



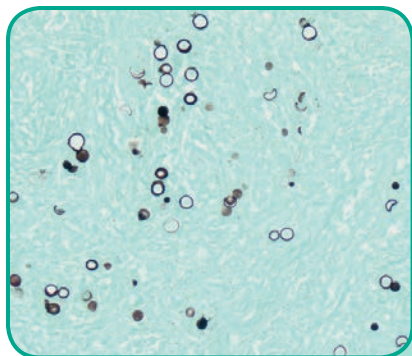
## Bielschowsky

TISSUE	PART	VOLUME
(+ Brain)	4058A	10/set
	4058B	98/set



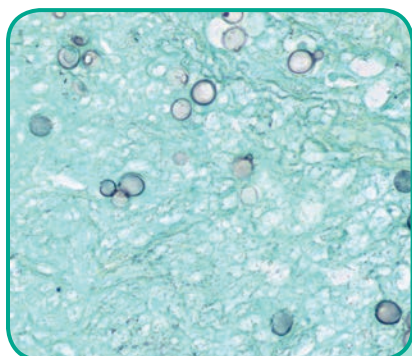
## Bile

TISSUE	PART	VOLUME
(+ Liver)	4060A	10/set
	4060B	98/set



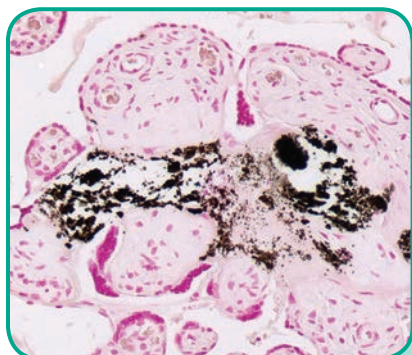
### Blastomyces sp.

TISSUE	PART	VOLUME
(+) Lung	4090A	10/set
(-) Lung	4090B	98/set



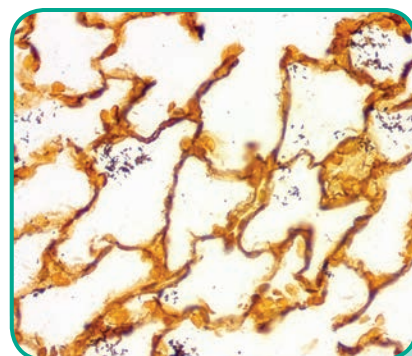
### Blastomyces sp., Animal

TISSUE	PART	VOLUME
(+) Animal Lymph Node	4091A	10/set
(-) Lung	4091B	98/set



### Calcium

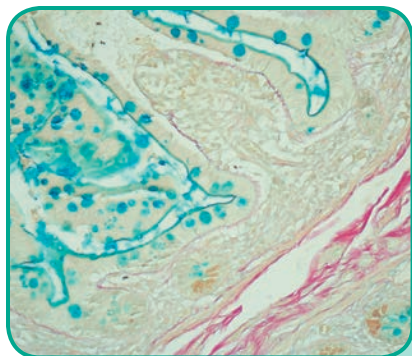
TISSUE	PART	VOLUME
(+) Placenta	4100A	10/set
	4100B	98/set



### Cat Scratch, Artificial

TISSUE	PART	VOLUME
(+) Rat Lung	4110A	10/set
(-) Lung	4110B	98/set

*Organisms artificially introduced into a rat organ through a non-infectious process.*



## Colloidal Iron

### TISSUE

(+) Small Intestine

### PART

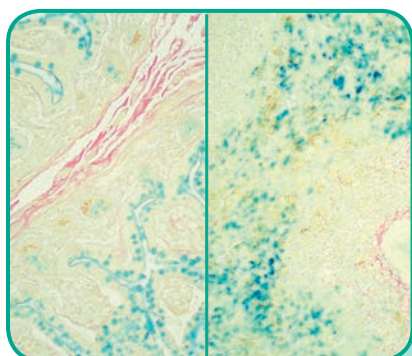
4127A

4127B

### VOLUME

10/set

98/set



## Colloidal Iron, Multi-Tissue

### TISSUE

(+) Small Intestine

(+) Iron, Animal

### PART

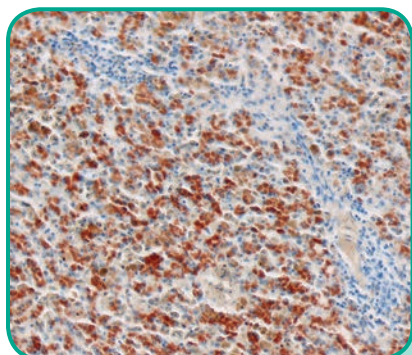
4128A

4128B

### VOLUME

10/set

98/set



## Copper, Animal

### TISSUE

(+) Animal Liver

### PART

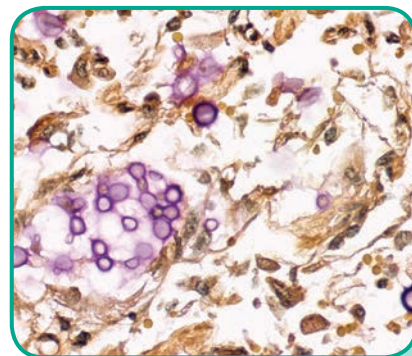
4130A

4130B

### VOLUME

10/set

98/set



## Cryptococcus sp.

### TISSUE

(+) Lung

(-) Lung

### PART

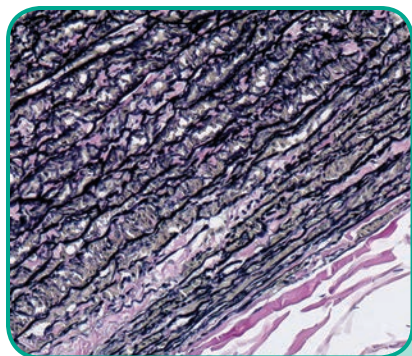
4135A

4135B

### VOLUME

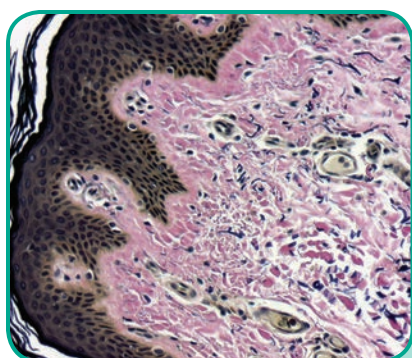
10/set

98/set



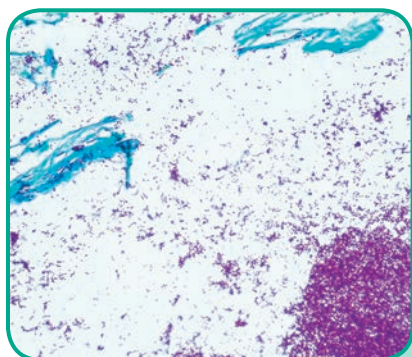
### Elastic, Aorta

TISSUE	PART	VOLUME
(+) Aorta	4194A	10/set
	4194B	98/set



### Elastic, Skin

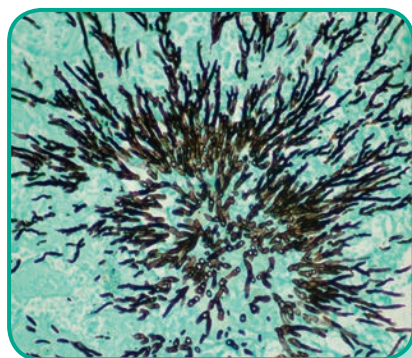
TISSUE	PART	VOLUME
(+) Skin	4195A	10/set
	4195B	98/set



### Fite, Nocardia sp., Artificial

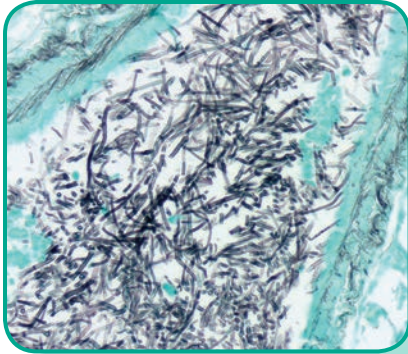
TISSUE	PART	VOLUME
(+) Rat Lung	4215A	10/set
(-) Lung	4215B	98/set

*Nocardia sp.* As procedural control for leprosy. Organisms artificially introduced into a rat organ through a non-infectious process.



### Fungus, GMS

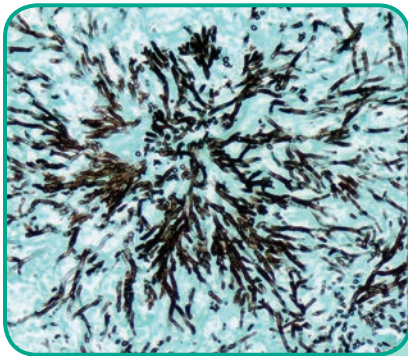
TISSUE	PART	VOLUME
(+) Lung	4223A	10/set
(-) Lung	4223B	98/set



## Fungus, GMS, Aspergillus sp., Artificial

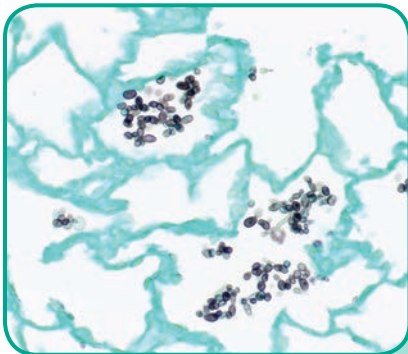
TISSUE	PART	VOLUME
(+) Rat Lung	4220A	10/set
(-) Lung	4220B	98/set

*Organisms artificially introduced into a rat organ through a non-infectious process.*



## Fungus, GMS, Aspergillus sp., Animal

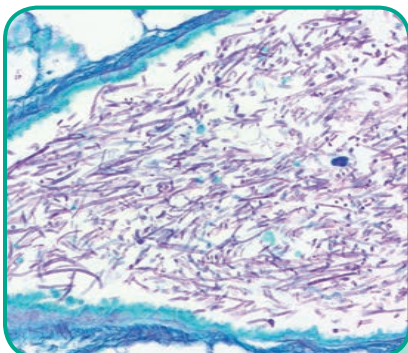
TISSUE	PART	VOLUME
(+) Animal Organ	4221A	10/set
(-) Lung	4221B	98/set



## Fungus, GMS, Candida sp., Artificial

TISSUE	PART	VOLUME
(+) Rat Lung	4230A	10/set
(-) Lung	4230B	98/set

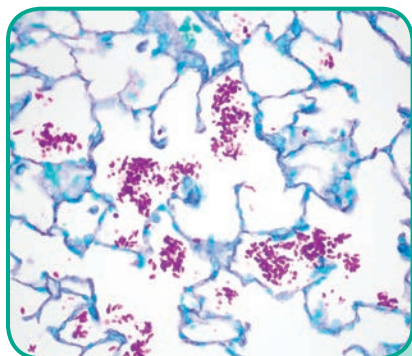
*Organisms artificially introduced into a rat organ through a non-infectious process.*



## Fungus, PAS, Aspergillus sp., Artificial

TISSUE	PART	VOLUME
(+) Rat Lung	4232A	10/set
(-) Lung	4232B	98/set

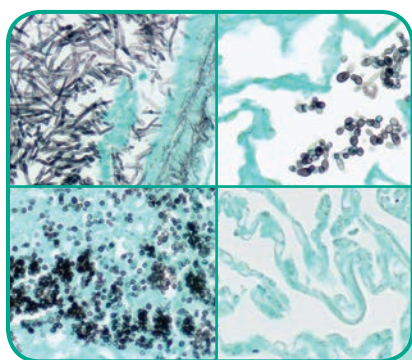
*Organisms artificially introduced into a rat organ through a non-infectious process.*



### Fungus, PAS, Candida sp., Artificial

TISSUE	PART	VOLUME
(+) Rat Lung	4233A	10/set
(-) Lung	4233B	98/set

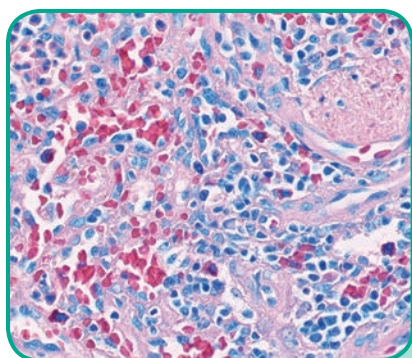
*Organisms artificially introduced into a rat organ through a non-infectious process.*



### Fungus, GMS, Multi-Tissue, Artificial

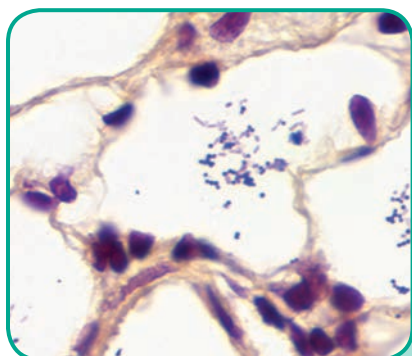
TISSUE	PART	VOLUME
(+) Aspergillus Rat Lung	(+) Candida Rat Lung	4235A 10/set
(+) Histoplasma Animal Tissue	(-) Lung	4235B 98/set

*The Aspergillus and Candida Tissues are organisms artificially introduced into a rat organ through a non-infectious process.*



### Giemsa

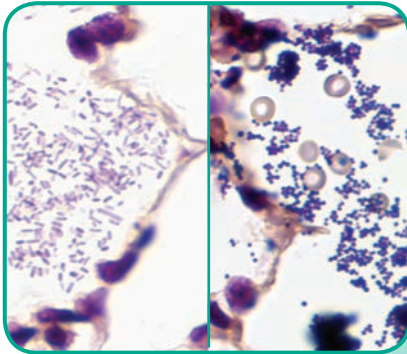
TISSUE	PART	VOLUME
(+) Spleen	4240A	10/set
	4240B	98/set



### Gram Positive & Gram Negative Bacteria, Artificial

TISSUE	PART	VOLUME
(+) Rat Lung	4255A	10/set
(-) Lung	4255B	98/set

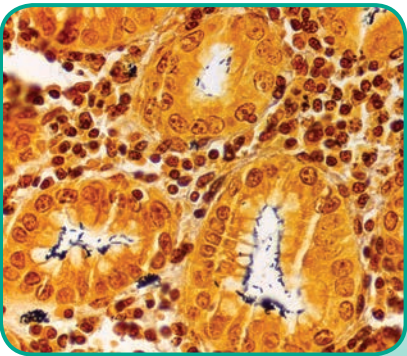
*Organisms artificially introduced into a rat organ through a non-infectious process.*



## Gram, Multi-Tissue, Artificial

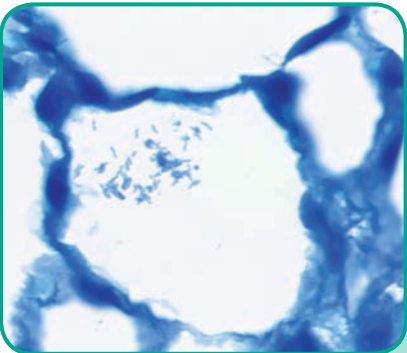
TISSUE	PART	VOLUME
(+) Gram Pos Rat Lung	4256A	10/set
(+) Gram Neg Rat Lung	4256B	98/set
(-) Lung		

*Organisms artificially introduced into a rat organ through a non-infectious process.*



## Helicobacter sp., Animal

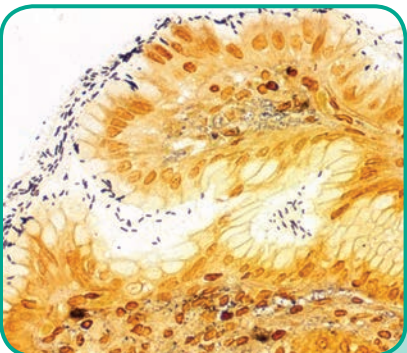
TISSUE	PART	VOLUME
(+) GI Tract, Animal	4274A	10/set
(-) Lung	4274B	98/set



## Helicobacter sp., Artificial

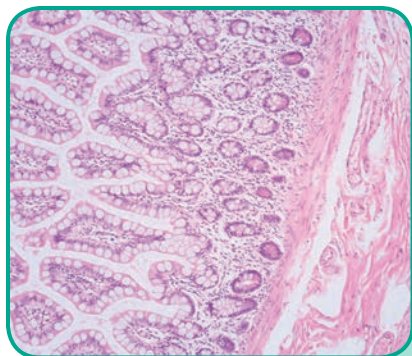
TISSUE	PART	VOLUME
(+) Rat Lung	4275A	10/set
(-) Lung	4275B	98/set

*Organisms artificially introduced into a rat organ through a non-infectious process.*



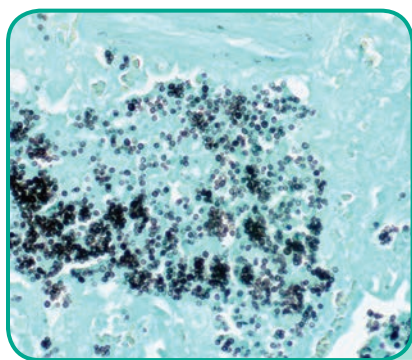
## Helicobacter sp.

TISSUE	PART	VOLUME
(+) GI Tract	4276A	10/set
(-) Lung	4276B	98/set



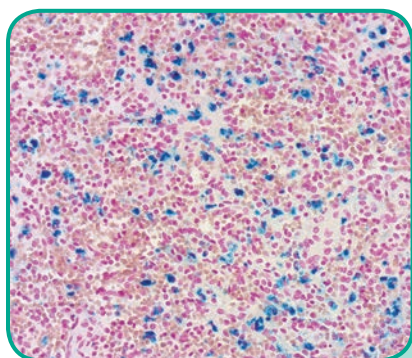
### Hematoxylin and Eosin (H&E)

TISSUE	PART	VOLUME
(+) Small Intestine	4278A	10/set
	4278B	98/set



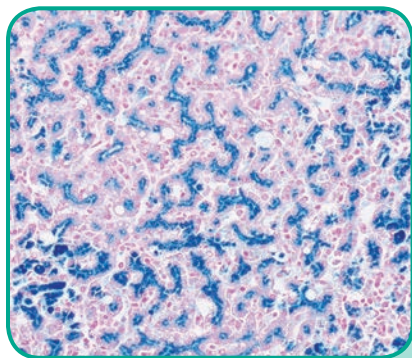
### Histoplasma sp., Animal

TISSUE	PART	VOLUME
(+) Animal Organ	4290A	10/set
(-) Lung	4290B	98/set



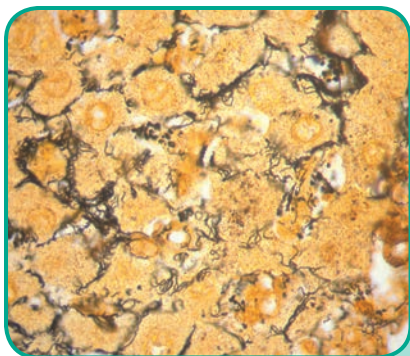
### Iron

TISSUE	PART	VOLUME
(+) Liver or Spleen	4320A	10/set
	4320B	98/set



### Iron, Animal

TISSUE	PART	VOLUME
(+) Animal Organ	4321A	10/set
	4321B	98/set



## Leptospira sp., Animal

### TISSUE

(+) Hamster Liver

(-) Lung

### PART

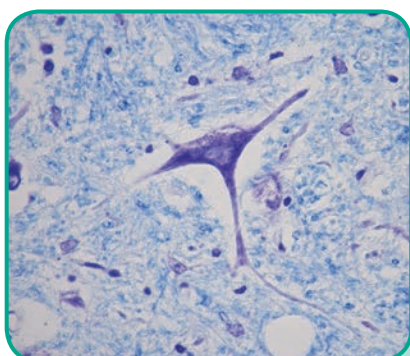
4402A

4402B

### VOLUME

10/set

98/set



## Luxol Fast Blue (LFB)

### TISSUE

(+) Spinal Cord

### PART

4407A

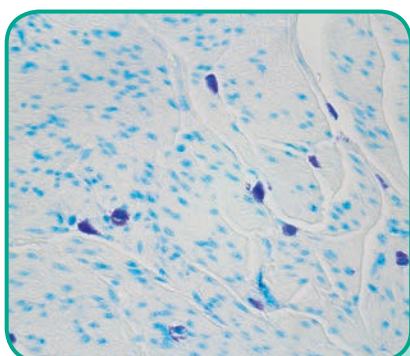
4407B

### VOLUME

10/set

98/set

*Cut at 8 microns.*



## Mast Cell

### TISSUE

(+) Bladder

### PART

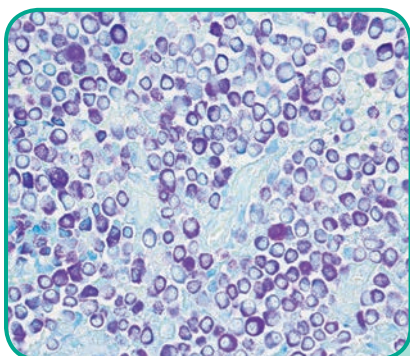
4410A

4410B

### VOLUME

10/set

98/set



## Mast Cell, Animal

### TISSUE

(+) Animal Tumor

### PART

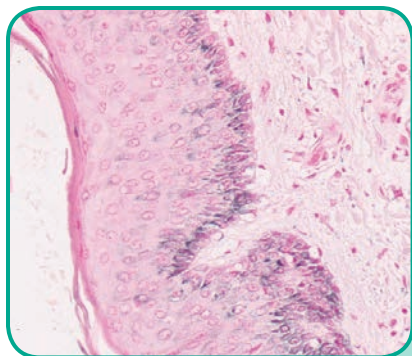
4412A

4412B

### VOLUME

10/set

98/set



### Melanin

#### TISSUE

(+) Skin

#### PART

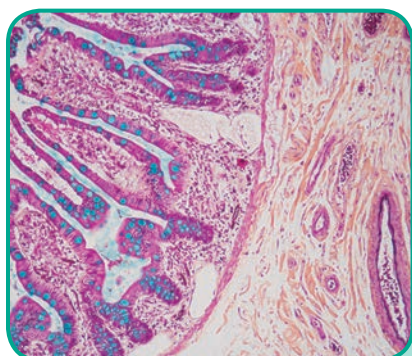
4430A

4430B

#### VOLUME

10/set

98/set



### Movat-Russell Pentachrome

#### TISSUE

(+) Small Intestine

(+) Lung

#### PART

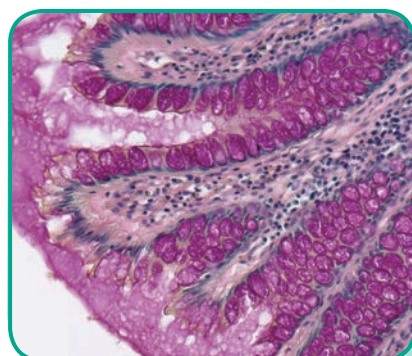
4440A

4440B

#### VOLUME

10/set

98/set



### Mucin Mucicarmine

#### TISSUE

(+) Colon

#### PART

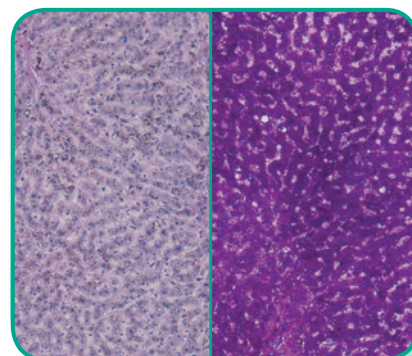
4455A

4455B

#### VOLUME

10/set

98/set



### Periodic Acid Schiff (PAS) Glycogen

#### TISSUE

(+) Liver

#### PART

4540A

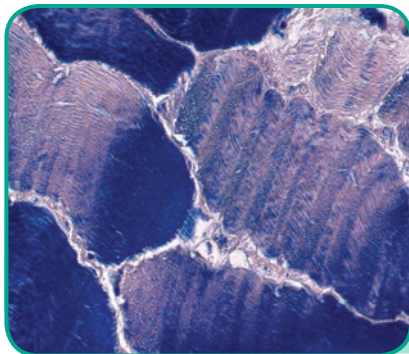
4540B

#### VOLUME

10/set

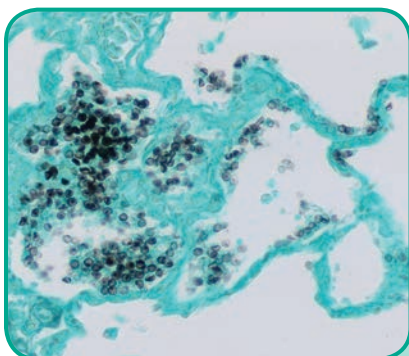
98/set

*With and without diastase digestion.*



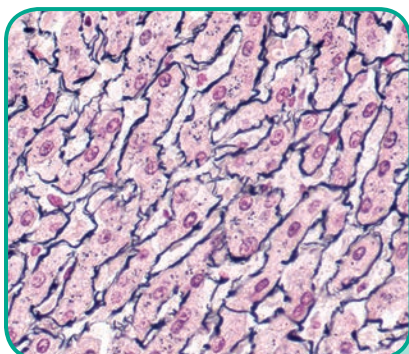
## Phosphotungstic Acid Hematoxylin (PTAH)

TISSUE	PART	VOLUME
(+) Striated Muscle	4565A	10/set
	4565B	98/set



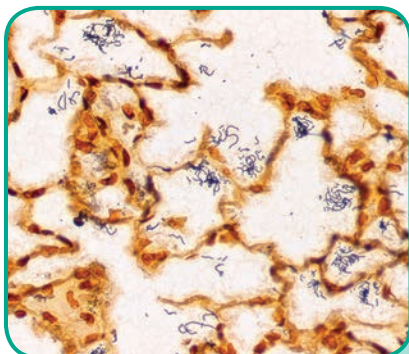
## Pneumocystis sp., Animal

TISSUE	PART	VOLUME
(+) Primate Lung	4556A	10/set
(-) Lung	4556B	98/set



## Reticulum

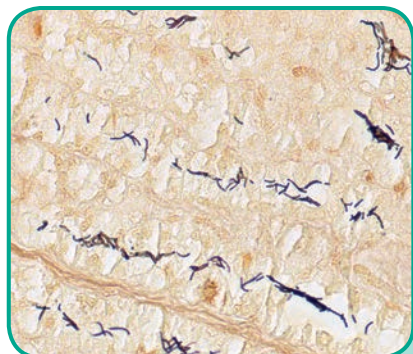
TISSUE	PART	VOLUME
(+) Liver	4620A	10/set
	4620B	98/set



## Spirochete, Artificial

TISSUE	PART	VOLUME
(+) Rat Lung	4655A	10/set
(-) Lung	4655B	98/set

*Organisms artificially introduced into a rat organ through a non-infectious process.*



### Spirochete, Animal

#### TISSUE

(+) Animal Organ

(-) Lung

#### PART

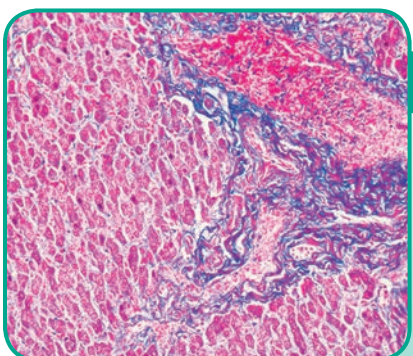
4660A

4660B

#### VOLUME

10/set

98/set



### Trichrome, Liver

#### TISSUE

(+) Liver

#### PART

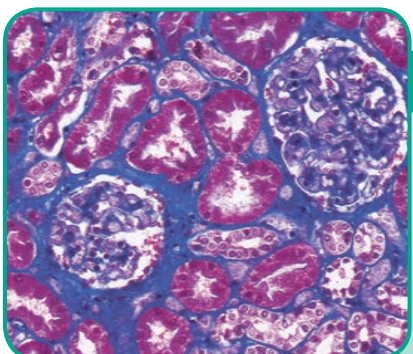
4690A

4690B

#### VOLUME

10/set

98/set



### Trichrome, Kidney

#### TISSUE

(+) Kidney

#### PART

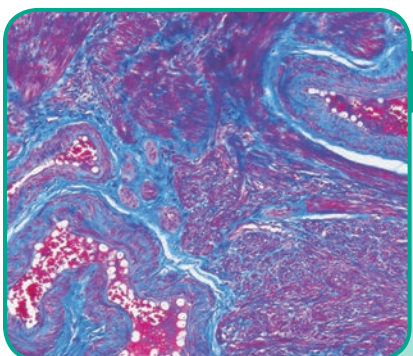
4691A

4691B

#### VOLUME

10/set

98/set



### Trichrome, Uterus

#### TISSUE

(+) Uterus

#### PART

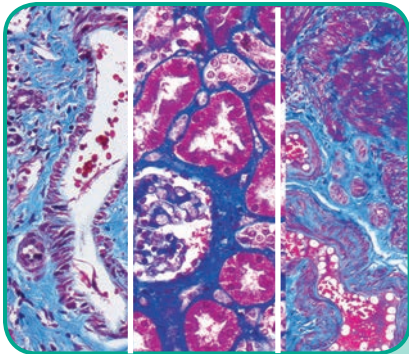
4695A

4695B

#### VOLUME

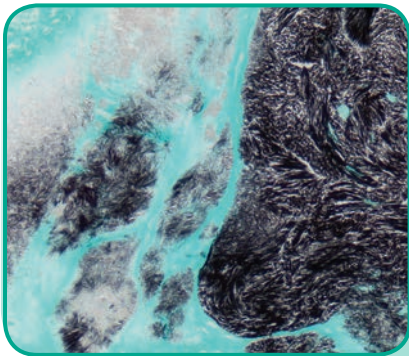
10/set

98/set



Trichrome, Multi-Tissue

TISSUE	PART	VOLUME
(+) Liver	4693A	10/set
(+) Kidney	4693B	98/set
(+) Uterus		



Urates

TISSUE	PART	VOLUME
(+) Gouty Tophi	4700A	10/set



All control slides are on Superfrost® Plus

All controls are cut in serial sections.

10/set = 10 unstained slides and 1 stained slide.

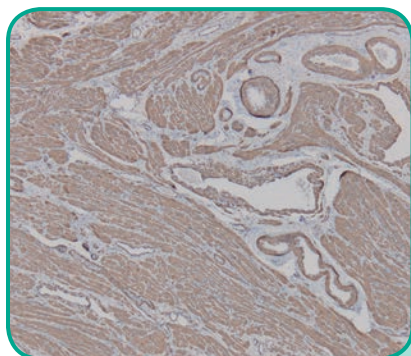
98/set = 98 unstained slides and 2 stained slides.

**Please note the following:** Allow 2-3 weeks for delivery of large sets. In human tissue unless otherwise indicated. All tissues are Formalin Fixed Paraffin Embedded (FFPE). All slides are air dried. Immunopathology slides are cut at 4 microns. Standard tissue placement is mid-high on slide. Visit our website for the most current control slide offering. The intended use of these control slides is to qualitatively assess the performance of the immunohistochemical stain. These controls are not intended for

quantitative purposes. Review the supplied stained slides with your pathologist prior to using the unstained slides to ensure that the intended analyte of interest is acceptable.

## Special Requests

We do offer the ability for our customers to make *special requests* on our immunopathology control slide product line. The most commonly fulfilled *special requests* are changes to the tissue placement, drying method, section thickness and/or slide glass. When a *special request* has been applied to an order an **SR** is added to the end of the part number. Please see page 3 for more details.



## Actin, Smooth Muscle

### TISSUE

(+) Uterus

### PART

3003A

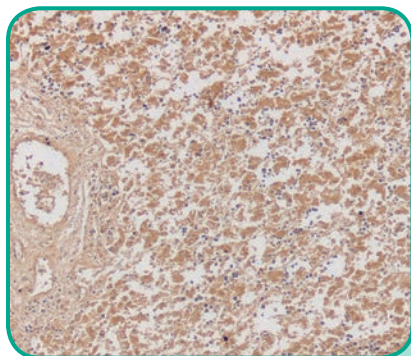
3003B

### VOLUME

10/set

98/set

*Internal negative control.*



## Alpha Fetoprotein (AFP)

### TISSUE

(+) Fetal Liver

(-) Adipose

### PART

3055A

3055B

### VOLUME

10/set

98/set



## BCL2

### TISSUE

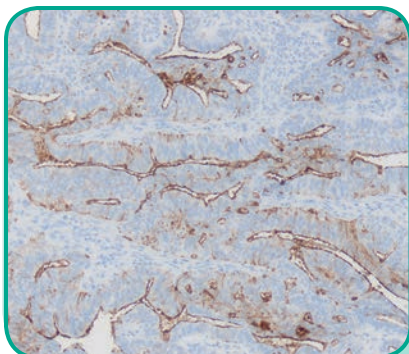
(+) Lymphoma

### PART

3052A

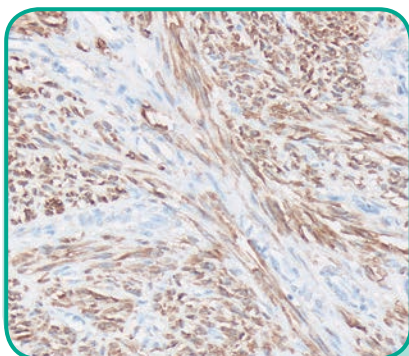
### VOLUME

10/set



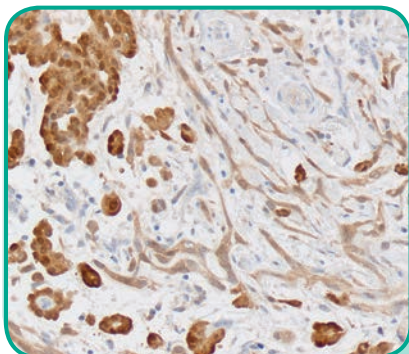
## CA-125

TISSUE	PART	VOLUME
(+) Endometrium	3140A	10/set
(-) Kidney	3140B	98/set



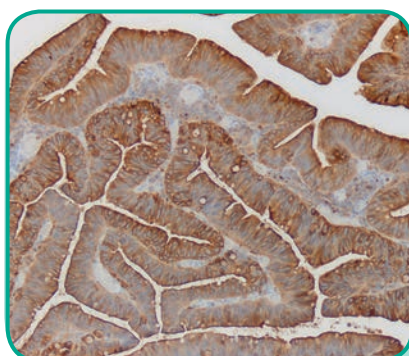
## Calponin

TISSUE	PART	VOLUME
(+) Uterus	3148A	10/set
	3148B	98/set



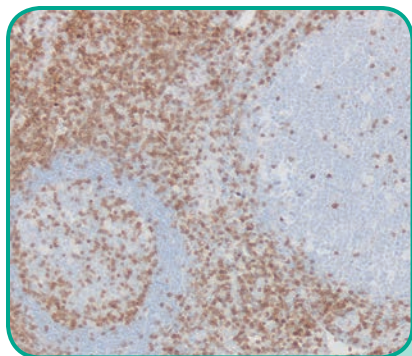
## Calretinin

TISSUE	PART	VOLUME
(+) Mesothelioma	3150A	10/set
(-) Myometrium	3150B	98/set



## Carcinoembryonic Antigen (CEA)

TISSUE	PART	VOLUME
(+) Colon	3160A	10/set
(-) Adipose	3160B	98/set



### CD3, T-Cell

#### TISSUE

(+) Tonsil

#### PART

3770A

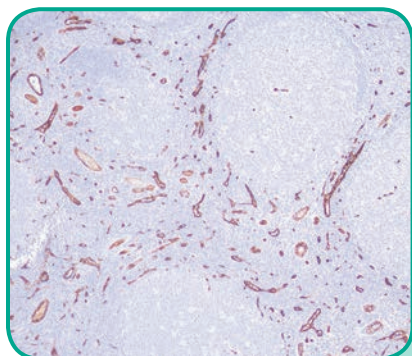
#### VOLUME

10/set

3770B

98/set

*Internal negative control.*



### CD8

#### TISSUE

(+) Tonsil

#### PART

3164A

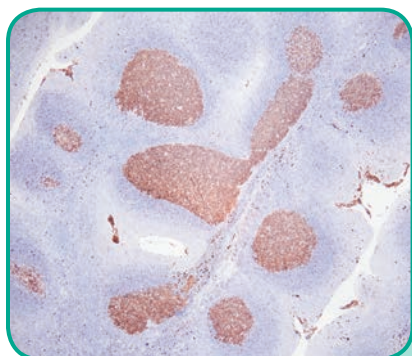
#### VOLUME

10/set

(-) Adipose

3164B

98/set



### CD10

#### TISSUE

(+) Tonsil

#### PART

3166A

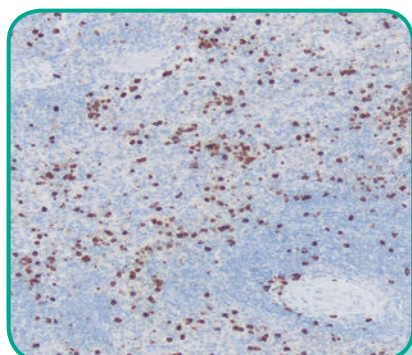
#### VOLUME

10/set

(-) Adipose

3166B

98/set



### CD15

#### TISSUE

(+) Hodgkin's Lymphoma

#### PART

3167A

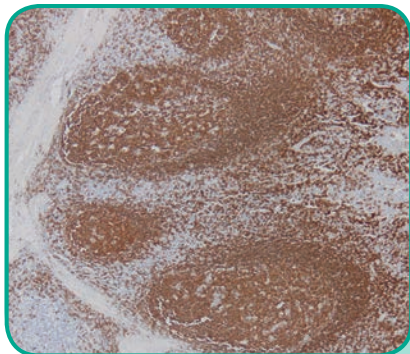
#### VOLUME

10/set

(-) Myometrium

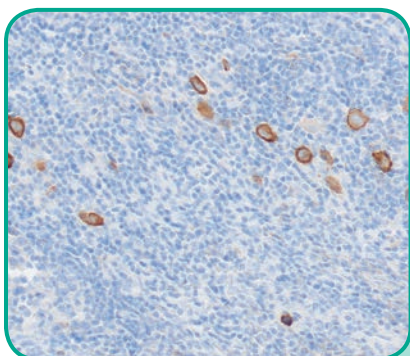
3167B

98/set



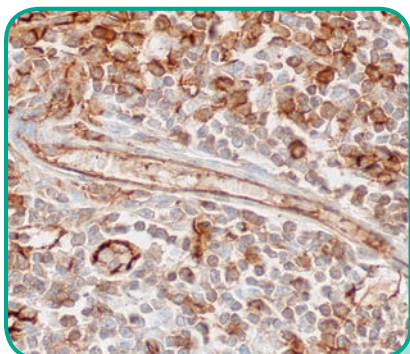
## CD20, B-Cell

TISSUE	PART	VOLUME
(+) Tonsil	3050A	10/set
(-) Kidney	3050B	98/set



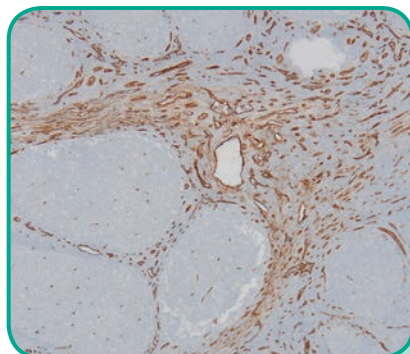
## CD30

TISSUE	PART	VOLUME
(+) Hodgkin's Lymphoma	3175A	10/set
(-) Kidney	3175B	98/set



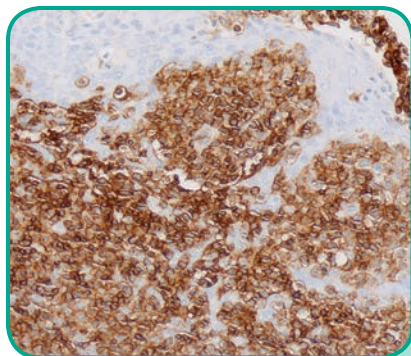
## CD31, PECAM-1

TISSUE	PART	VOLUME
(+) Tonsil	3174A	10/set
	3174B	98/set



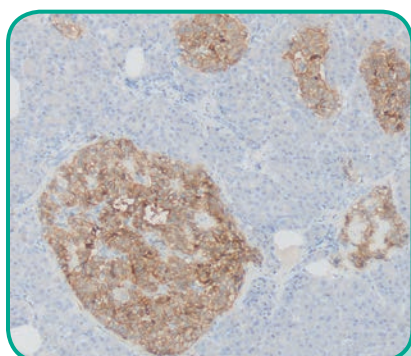
## CD34

TISSUE	PART	VOLUME
(+) Tonsil	3176A	10/set
	3176B	98/set



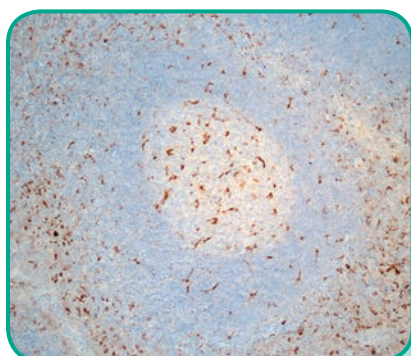
### CD45, Leucocyte Common Antigen (LCA)

TISSUE	PART	VOLUME
(+) Tonsil	3545A	10/set
(-) Adipose	3545B	98/set



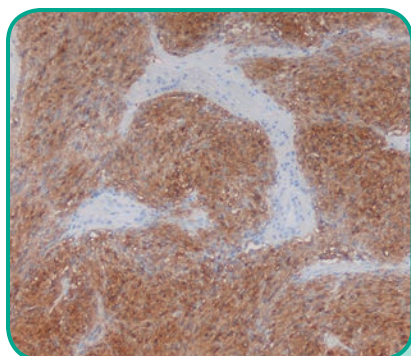
### CD56

TISSUE	PART	VOLUME
(+) Pancreas	3184A	10/set
(-) Lung	3184B	98/set



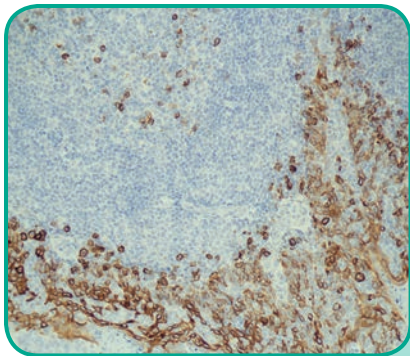
### CD68

TISSUE	PART	VOLUME
(+) Tonsil	3185A	10/set
(-) Myometrium	3185B	98/set



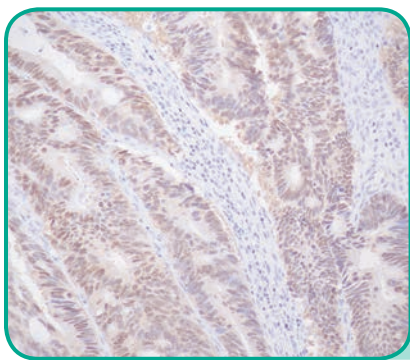
### CD117, c-Kit

TISSUE	PART	VOLUME
(+) GIST	3170A	10/set
(-) Adipose	3170B	98/set



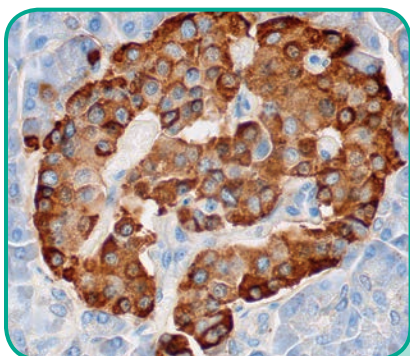
## CD138

TISSUE	PART	VOLUME
(+) Tonsil	3188A	10/set
(-) Adipose	3188B	98/set



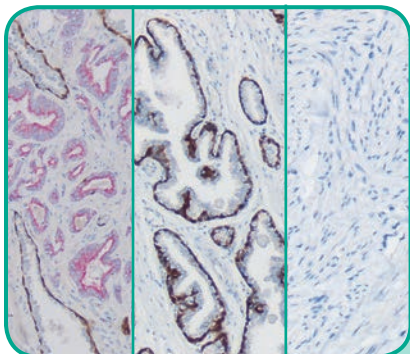
## CDX2

TISSUE	PART	VOLUME
(+) Colon	3189A	10/set
(-) Myometrium	3189B	98/set



## Chromogranin A

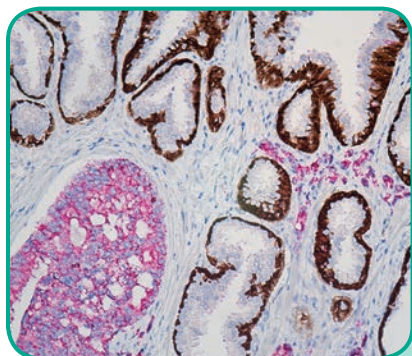
TISSUE	PART	VOLUME
(+) Pancreas	3190A	10/set
(-) Kidney	3190B	98/set



## CK5/14 + p63 + P504S, Multi-Tissue

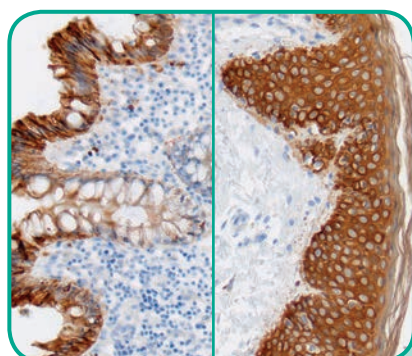
TISSUE	PART	VOLUME
(+) P504S Prostate	3650A	10/set
(+) CK5/14, p63 Prostate	3650B	98/set
(-) Myometrium		

*(Formerly known as PIN-4 Cocktail Multi-Tissue Control Slide.)*



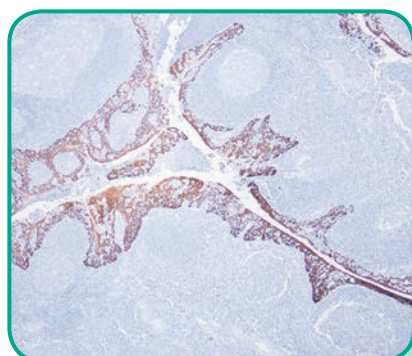
### CK5/14 + p63 + P504S

TISSUE	PART	VOLUME
(+) Prostate	3651A	10/set
(-) Myometrium	3651B	98/set



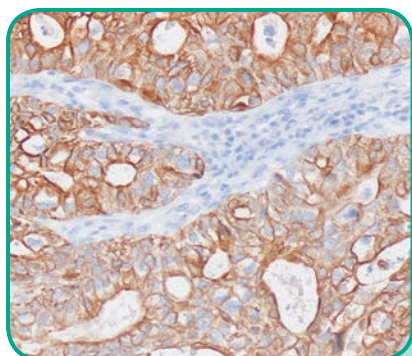
### Cytokeratin AE1/AE3

TISSUE	PART	VOLUME
(+) Skin	3235A	10/set
(+) Colon	3235B	98/set
(-) Myometrium		



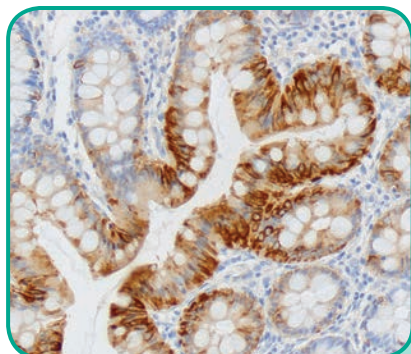
### Cytokeratin 5/6 (CK5/6)

TISSUE	PART	VOLUME
(+) Tonsil	3230A	10/set
(-) Liver	3230B	98/set



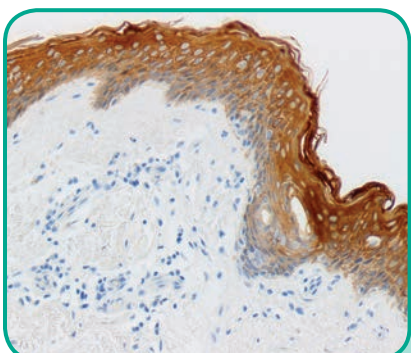
### Cytokeratin 7 (CK7)

TISSUE	PART	VOLUME
(+) Lung	3232A	10/set
(-) Myometrium	3232B	98/set



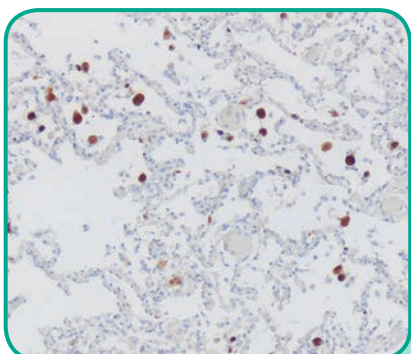
## Cytokeratin 20 (CK20)

TISSUE	PART	VOLUME
(+) Colon	3233A	10/set
(-) Myometrium	3233B	98/set



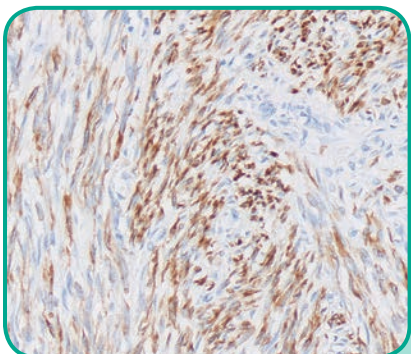
## Cytokeratin, HMW

TISSUE	PART	VOLUME
(+) Skin	3237A	10/set
(-) Myometrium	3237B	98/set



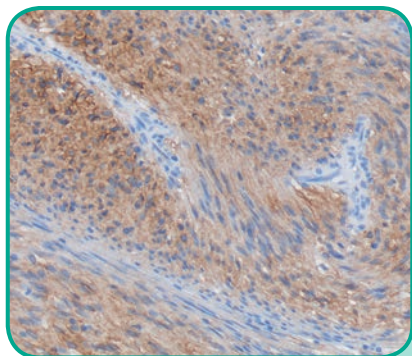
## Cytomegalovirus (CMV)

TISSUE	PART	VOLUME
(+) Lung	3240A	10/set
(-) Myometrium	3240B	98/set



## Desmin

TISSUE	PART	VOLUME
(+) Leiomyoma Uterus	3255A	10/set
(-) Tonsil	3255B	98/set



### DOG1

#### TISSUE

(+) GIST

(-) Kidney

#### PART

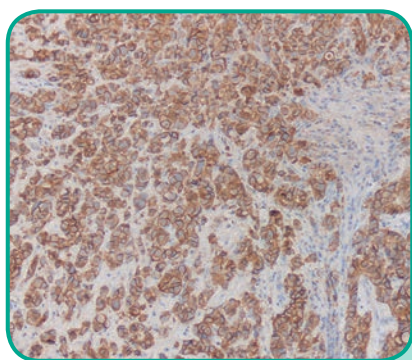
3257A

3257B

#### VOLUME

10/set

98/set



### E-cadherin

#### TISSUE

(+) Ductal Breast

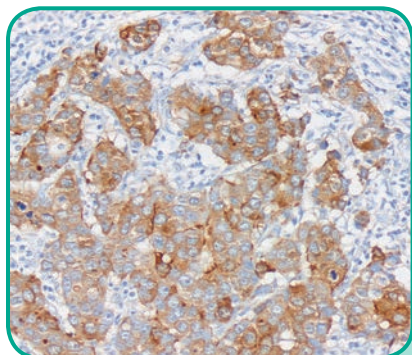
(-) Myometrium

#### PART

3283A

#### VOLUME

10/set



### Epithelial Membrane Antigen (EMA)

#### TISSUE

(+) Breast

(-) Thyroid

#### PART

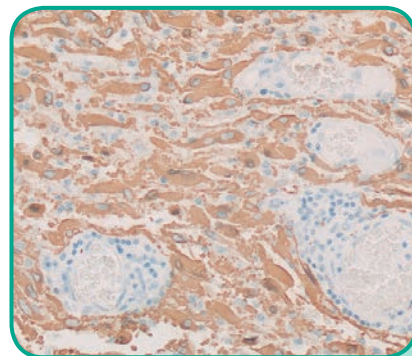
3285A

3285B

#### VOLUME

10/set

98/set



### Glial Fibrillary Acidic Protein (GFAP)

#### TISSUE

(+) Glioblastoma

(-) Myometrium

#### PART

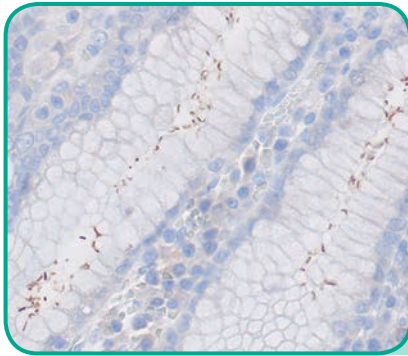
3320A

3320B

#### VOLUME

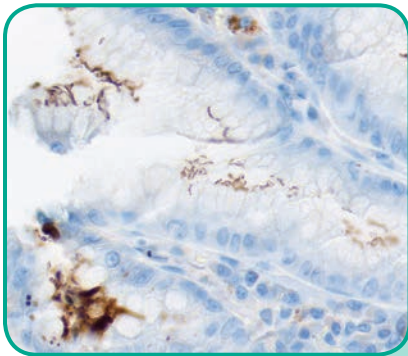
10/set

98/set



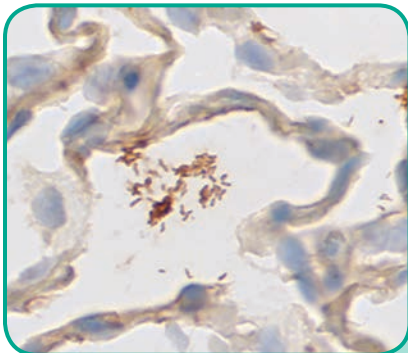
## Helicobacter sp.

TISSUE	PART	VOLUME
(+) GI Tract	3276A	10/set
(-) Lung	3276B	98/set



## Helicobacter sp., Animal

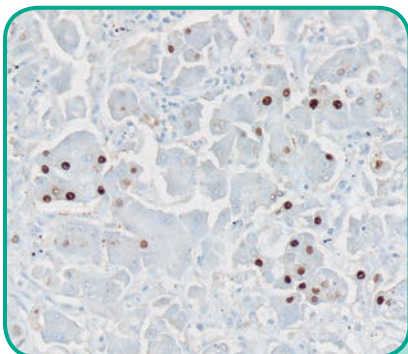
TISSUE	PART	VOLUME
(+) GI Tract, Animal	3274A	10/set
(-) Lung	3274B	98/set



## Helicobacter sp., Artificial

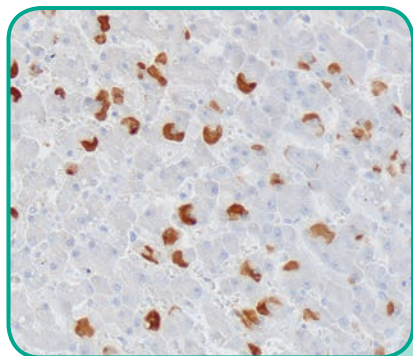
TISSUE	PART	VOLUME
(+) Rat Lung	3270A	10/set
(-) Lung	3270B	98/set

*Organisms artificially introduced into a rat organ through a non-infectious process.*



## Hepatitis B Core Antigen (HBcAG)

TISSUE	PART	VOLUME
(+) Liver	3360A	10/set
(-) Kidney		



### Hepatitis B Surface Antigen (HBsAG)

#### TISSUE

(+) Liver

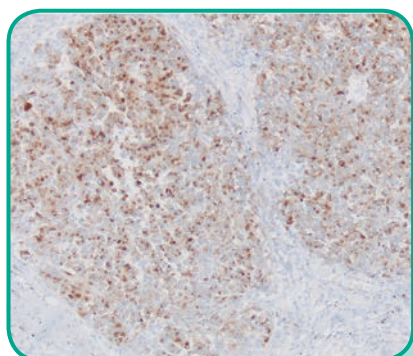
(-) Kidney

#### PART

3365A

#### VOLUME

10/set



### HMB-45

#### TISSUE

(+) Melanoma

(-) Lung

#### PART

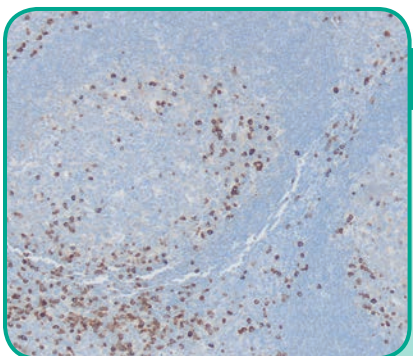
3370A

3370B

#### VOLUME

10/set

98/set



### Kappa

#### TISSUE

(+) Tonsil

#### PART

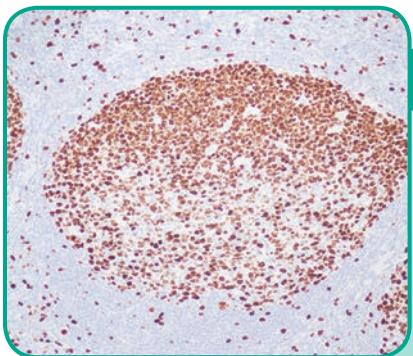
3480A

3480B

#### VOLUME

10/set

98/set



### Ki-67

#### TISSUE

(+) Tonsil

(-) Adipose

#### PART

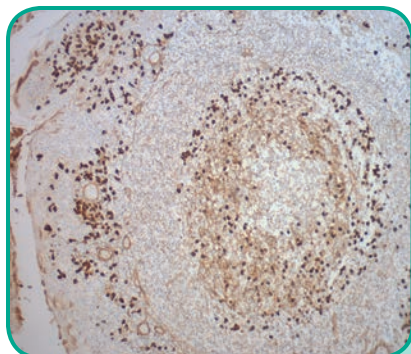
3485A

3485B

#### VOLUME

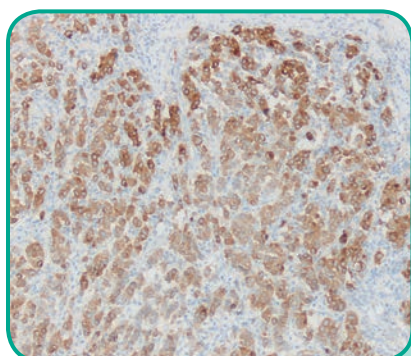
10/set

98/set



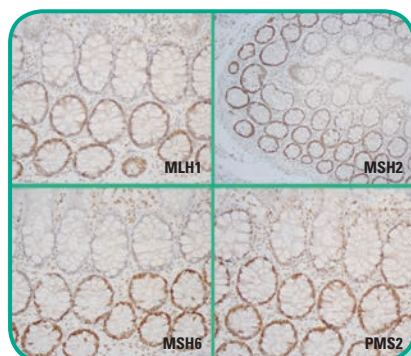
## Lambda

TISSUE	PART	VOLUME
(+) Tonsil	3530A	10/set
	3530B	98/set



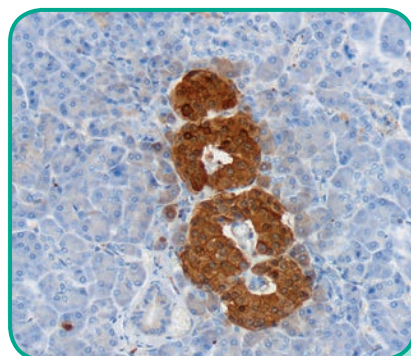
## Melan-A (MART-1)

TISSUE	PART	VOLUME
(+) Melanoma	3580A	10/set
(-) Lung	3580B	98/set



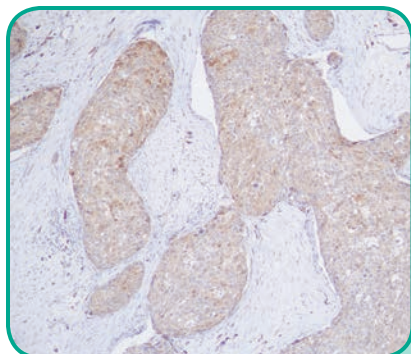
## Mismatch Repair (MMR) Positive

TISSUE	PART	VOLUME
(+) Normal Colon	3590B	98/set



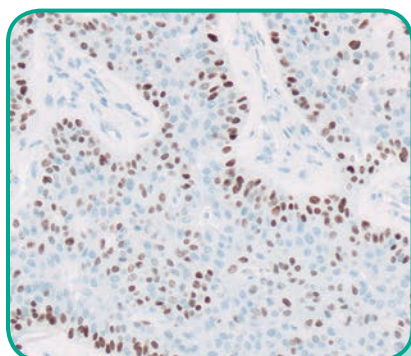
## Neuron-Specific Enolase (NSE)

TISSUE	PART	VOLUME
(+) Pancreas	3611A	10/set
(-) Adipose	3611B	98/set



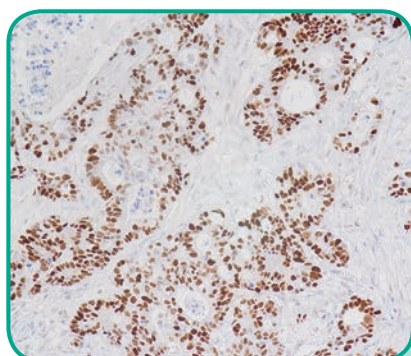
### p16

TISSUE	PART	VOLUME
(+) Breast	3625A	10/set
(-) Adipose	3625B	98/set



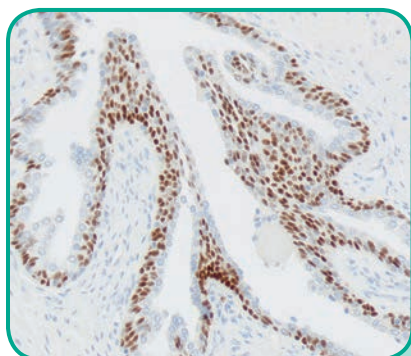
### p40

TISSUE	PART	VOLUME
(+) Lung	3635A	10/set
(-) Kidney	3635B	98/set



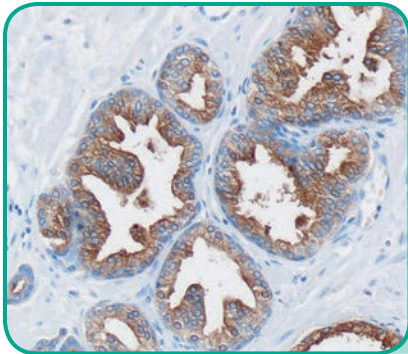
### p53

TISSUE	PART	VOLUME
(+) Colon	3640A	10/set
(-) Adipose	3640B	98/set



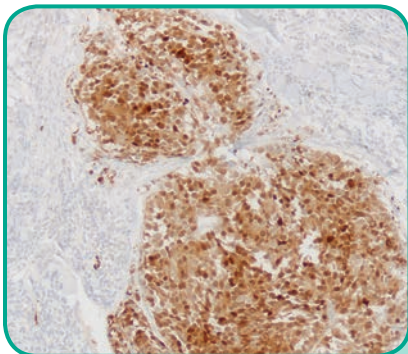
### p63

TISSUE	PART	VOLUME
(+) Benign Prostate	3641A	10/set
(-) Myometrium	3641B	98/set



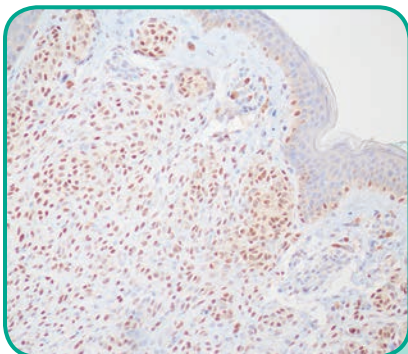
## Prostate Specific Antigen (PSA)

TISSUE	PART	VOLUME
(+) Prostate	3681A	10/set
(-) Lung	3681B	98/set



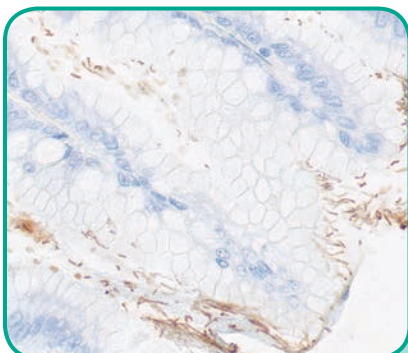
## S-100

TISSUE	PART	VOLUME
(+) Melanoma	3740A	10/set
(-) Lung	3740B	98/set



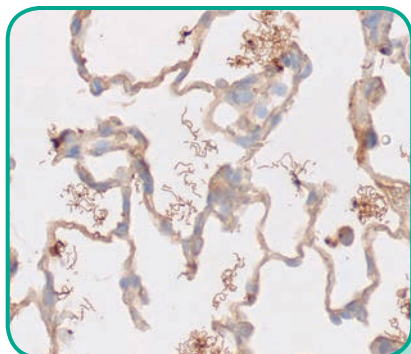
## SOX-10

TISSUE	PART	VOLUME
(+) Organ	3743A	10/set
(-) Myometrium	3743B	98/set



## Spirochete, Animal

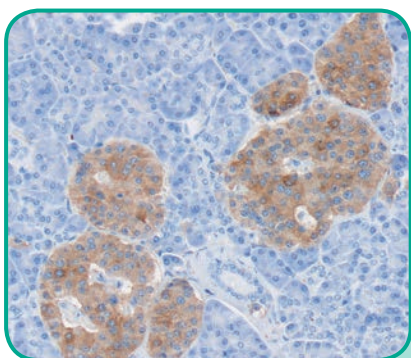
TISSUE	PART	VOLUME
(+) Animal Organ	3745A	10/set
(-) Lung	3745B	98/set



### Spirochete Treponema sp., Artificial

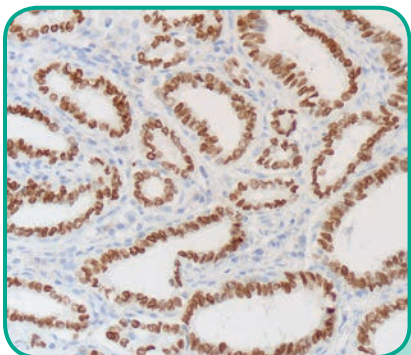
TISSUE	PART	VOLUME
(+) Rat Lung	3746A	10/set
(-) Lung	3746B	98/set

*Organisms artificially introduced into a rat organ through a non-infectious process.*



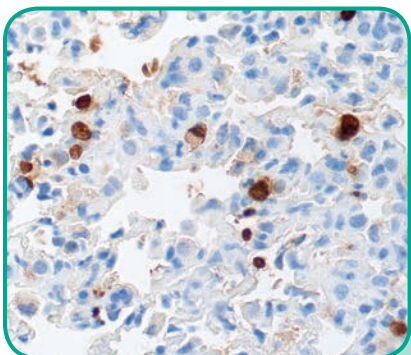
### Synaptophysin

TISSUE	PART	VOLUME
(+) Pancreas	3750A	10/set
(-) Kidney	3750B	98/set



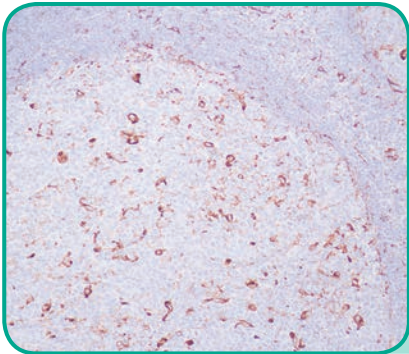
### Thyroid Transcription Factor (TTF-1)

TISSUE	PART	VOLUME
(+) Thyroid	3780A	10/set
(-) Myometrium	3780B	98/set



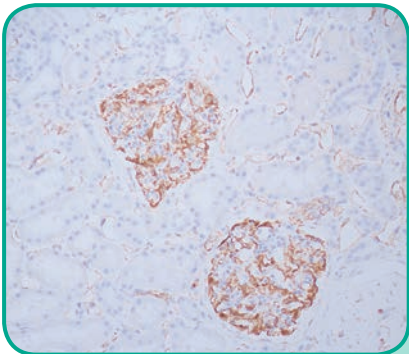
### Toxoplasma sp., Animal

TISSUE	PART	VOLUME
(+) Rat Organ	3801A	10/set
(-) Myometrium	3801B	98/set



Vimentin

TISSUE	PART	VOLUME
(+) Tonsil	3870A	10/set
(-) Adipose	3870B	98/set



Wilms' Tumor (WT1)

TISSUE	PART	VOLUME
(+) Kidney	3900A	10/set
(-) Lung	3900B	98/set



"There are two ways to live your life. One is as though nothing is a miracle. The other is as though everything is a miracle." -Albert Einstein





2505 Parview Road • Middleton, WI 53562-2579 • 800-383-7799

[www.newcomersupply.com](http://www.newcomersupply.com)