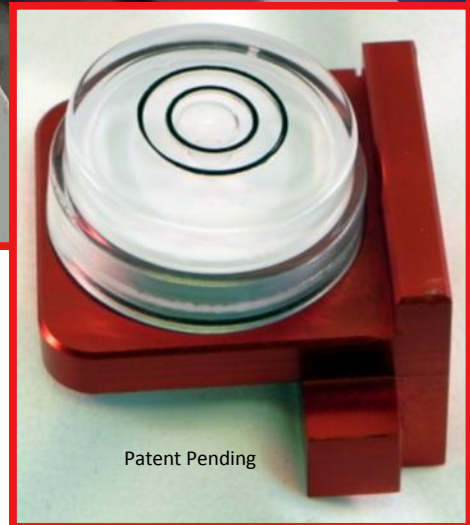
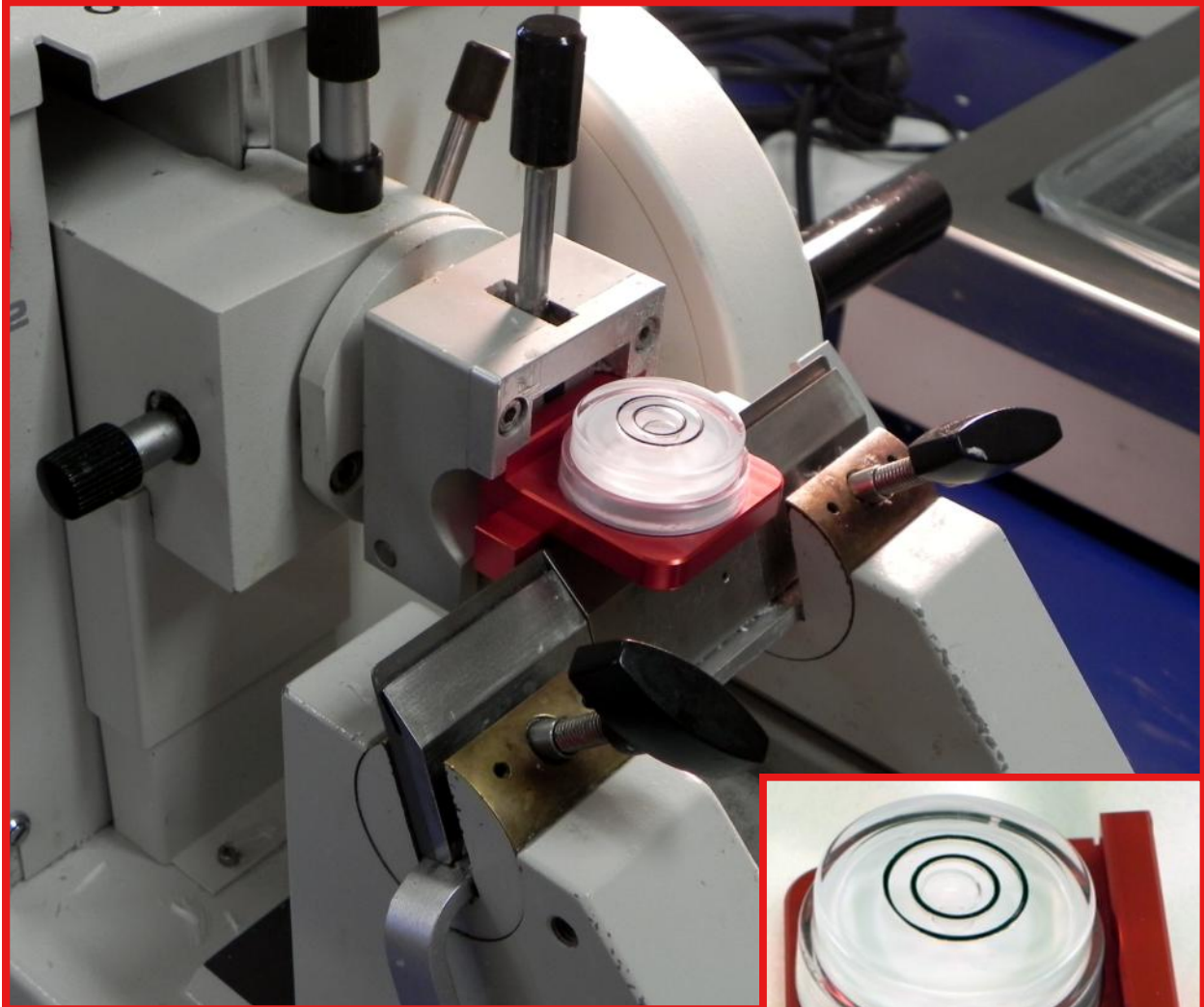


# UNIVERSAL MICROTOME ALIGNMENT TOOL INSTRUCTION MANUAL



Patent Pending



**ALIGNMENT MADE EASY**

For technical service and questions: call 603-217-7456

or

email: [tsp2@gsinet.net](mailto:tsp2@gsinet.net)

Distributed By:

**NEWCOMER SUPPLY**<sup>®</sup>  
Your Histology Supplier

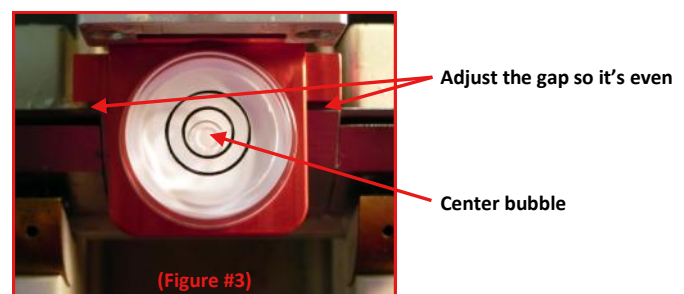
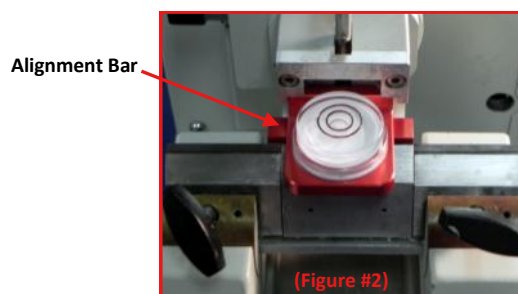
Middleton, WI • (800) 383 • 7799 • [www.newcomersupply.com](http://www.newcomersupply.com)

## INSTRUCTIONS:

- 1) Remove Blade from knife holder
- 2) Move microtome specimen head all the way back to the “home” position.
- 3) Insert Alignment tool into the specimen head clamp with the bubble level facing up (see figure #1).



- 4) Release orientation head locking lever so that the orientation head can be adjusted.
- 5) Slowly move specimen head forward from “home” position until alignment bar on tool is almost touching the backside of the knife holder (see figure 2). You may need to manually lower the specimen head with hand wheel to match up the alignment bar with the back side of the knife holder (see figure #2).



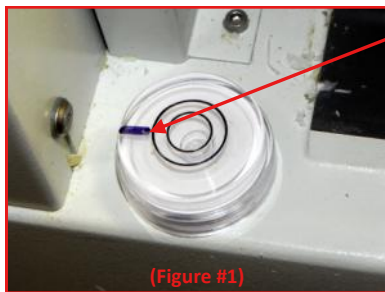
Note: When lowering specimen head and alignment tool, **DO NOT** hit the knife holder as this may cause damage to the knife holder.

- 6) Adjust the gap between knife holder and alignment bar so the left and the right side of alignment bar has the same amount of gap. You may need to advance or retract specimen head to get the best position. This will adjust the “Z” axis alignment (see figure #3).
- 7) Center the bubble in circle level by adjusting the “X” and “Y” axis. (see figure #3)
- 8) Once the bubble in the level is centered, lock orientation head with locking lever.
- 9) Re-check the alignment bar gap (steps 5 & 6)
- 10) Your microtome orientation head should now be aligned!

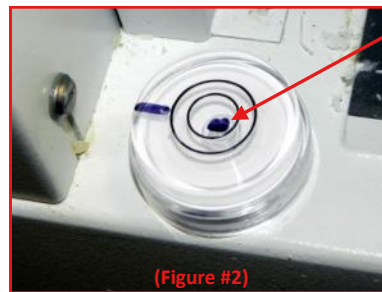
***\* To receive optimal performance from this alignment tool, your microtome must be level and your specimen head clamp must be free of any debris.***

If the bench or the microtome is found not to be level, here are some suggestions to try and accommodate for this issue;

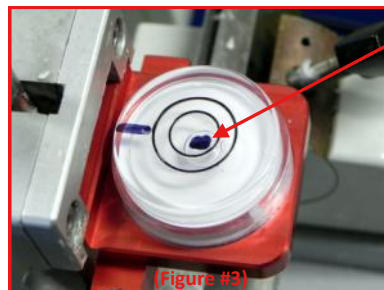
- 1) Purchase different types and/or sizes of rubber or felt feet from a local hardware store for adjusting the level foundation beneath the microtome.
- 2) Use shims of metal or wood to level the base of the microtome.
- 3) Have your bench top leveled by a maintenance ace or carpenter.
- 4) If your microtome has adjustable feet, manipulate them to bring your microtome to level.
- 5) Match the offset of your microtome or your bench top by physically marking the actual offset on the aligner level. The new marking becomes the “zero” target mark. (See diagrams below)



Set level on base of microtome and make an orientation mark to designate a point of reference for placement on the chuck



Wherever the level bubble sits, place a dot right in the center of the bubble. This is now the zero mark for leveling the microtome.



Once in the chuck, make sure the orientation mark is pointing in the correct direction as it was on the base.

Adjust chuck holder until the bubble is directly under the dot that designates the new zero mark for the microtome.